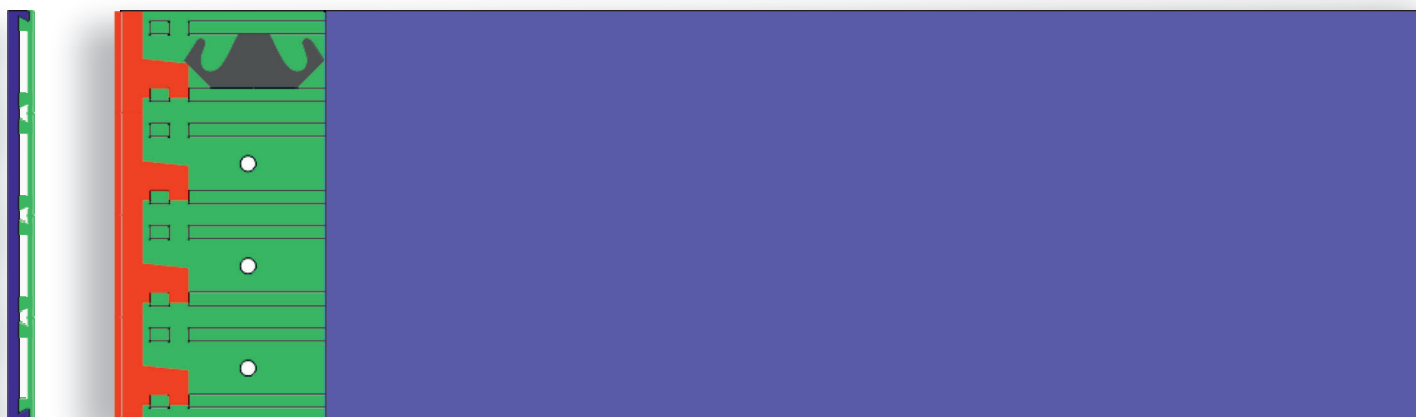


modular wayfinding system

**infonorm**<sup>®</sup>

technical catalog  
2023





basic elements	1
functionality	2
grid system	3
ordering instructions	4
base profiles	5
cover profiles	- standard 7
	- selflettering 9
end caps	11
security locking	13
Specification guidelines	15

high quality swiss signs



**infonorm** is a modular aluminium sign system. Three main components provide the building blocks for every infonorm sign.

### base profile

accepting 1 or several cover profiles.  
Easy to wall-mount by screws or double tape

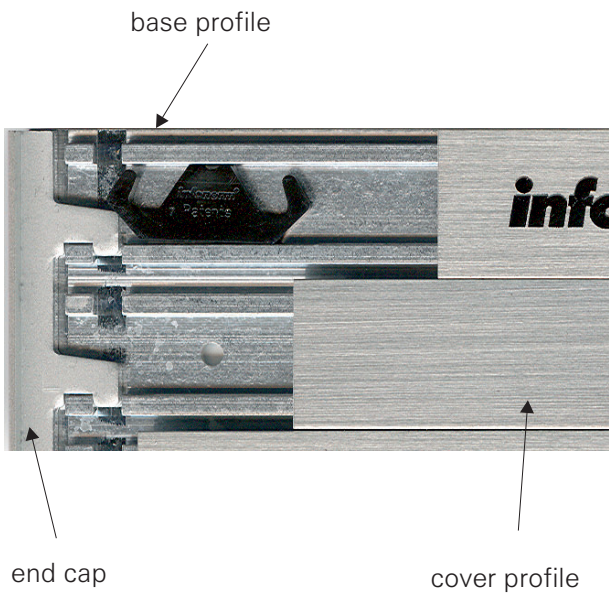
### cover profile

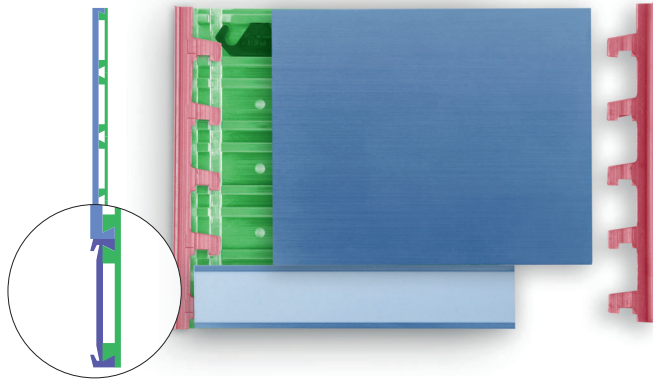
accepting any lettering, including special profiles for selflettering and slider-system vacant/occupied

### end caps

secured by sturdy plastic springs mounted on the base profiles. Hold the cover profile(s) securely in place.

All **infonorm** profiles are interchangeable and offer unlimited option for combinations; also with other product lines.





**infonorm** is a precision engineered alu sign system produced in Switzerland. The **slats (panels/cover profiles)** are sled on to the **base profiles**. They are being fixed and kept in place by **end caps** on both sides.

Totally 18 different **cover profiles** do offer nearly unlimited options and combinations.

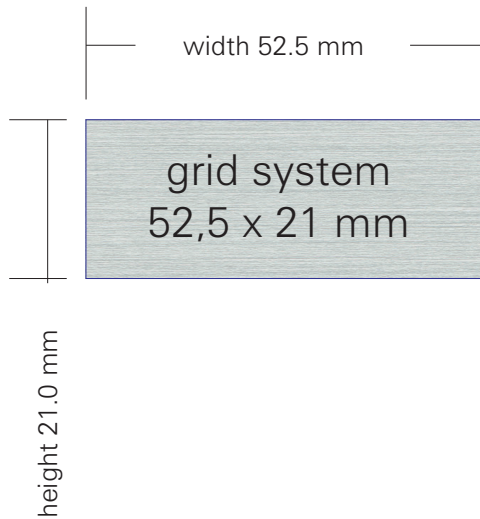
No limits are set to creativness and signage request by designers and end users



base profile



cover profile



### grid sizes

The **info<sub>norm</sub>**-grid determines the width (horizontal) and height (vertical) measurement for each sign.

Each box on the grid is 52.5 mm wide and 21 mm high.

The standard grid goes from 52.5 x 21 mm up to 2100 x 2100 mm

Special widths on request.

high quality swiss signs

easy to order:

- see grid below
- indicate finish and type of end caps

	52.5	105	157.5	210	262.5	315	367.5	420	472.5	525	577.5	630	682.5	735	787.5	840	892.5	945	997.5	1050	
42																					
63																					
84																					
105																					
126																					
147																					
168																					
189																					
210																					
231																					
252																					
273																					
294																					
315																					
336																					
357																					
378																					
399																					
420																					
441																					
462																					
483																					
504																					
525																					
546																					
567																					
588																					
609																					
630																					
651																					
672																					
693																					
714																					
735																					
756																					

high quality swiss signs



Three simple components provide the building blocks for every **infonorm**-sign

- 1 base profile
- 1 or several cover profiles
- 1 pair of end caps holding the profile(s) in position.

The size of the base profile is the size of the entire sign.  
(+end caps)

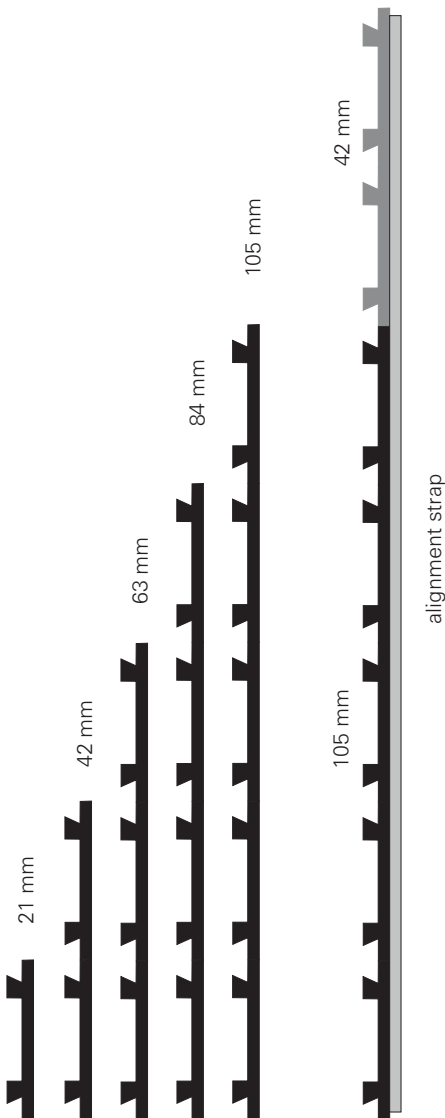
### Function

Quick and easy to install. Double - sided tape or simple screws are all it takes to attach the signs directly to doors and walls.

### Material

Aluminium extrusions  
Resistant material, also for outdoor use.



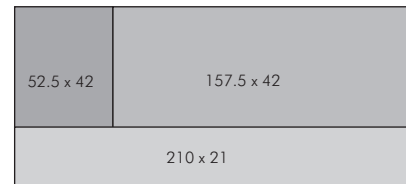


### Sizes

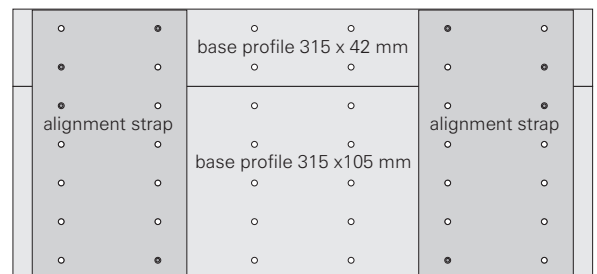
Standard extrusions are available ex stock up to the grid height 105 mm. Larger base plates can easily be assembled.

High precision standards guarantee for perfect function. One or several cover profiles fit precisely on to a base profile.

see example below



Large base profiles/plates can easily be assembled by using vertical alignment straps to combine and link the standard extrusions.





### Features

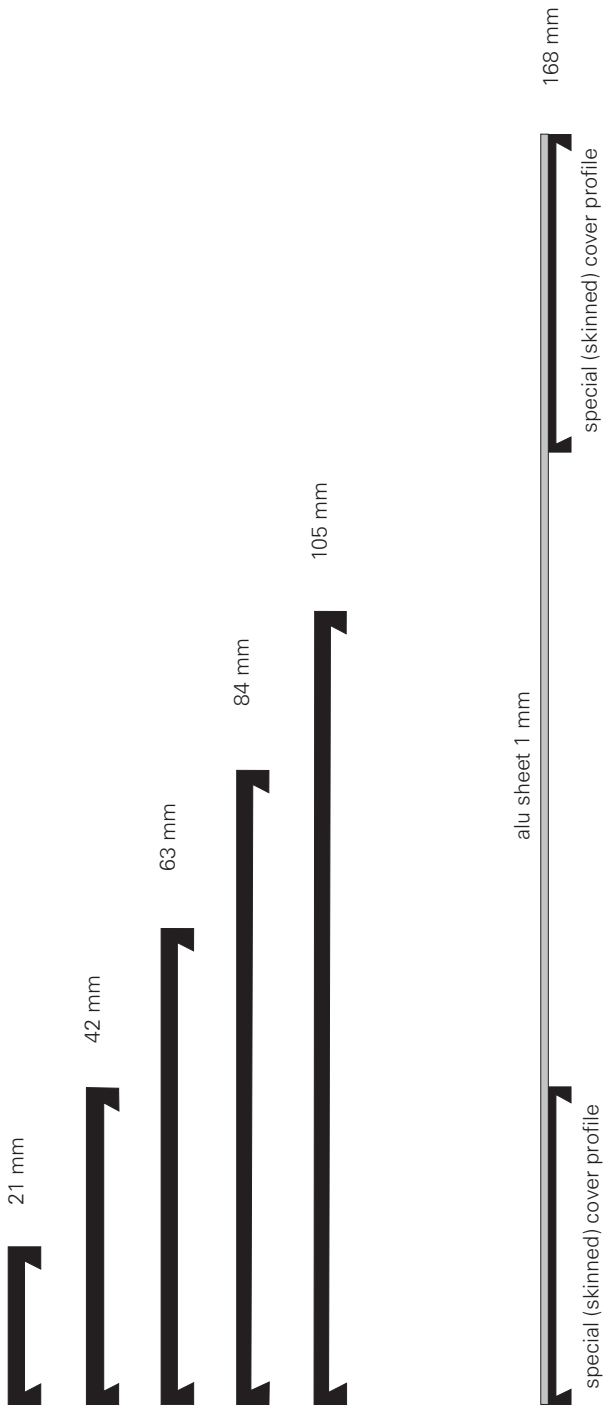
The standard cover profile is an extruded aluminium face plate with rear guides that slide onto the base profile's tracks.

### Material

Aluminium extrusion

### Finish

Standard is natural anodised with special **infonorm**® hairline finish. Covers can also be painted in any colours.



### Sizes

Cover profiles come in 5 standard heights. (21 - 105 mm)

Standard widths follow the grid size 52.5 mm up to 2100 mm.

Special sizes upon request.

Covers exceeding the max. extrusion height 105 mm can be assembled upon demand. Same thickness as standard extrusions.

Special (skinned) cover profiles are used for these constructions.

overall thickness: 6 - 8 mm



### Function

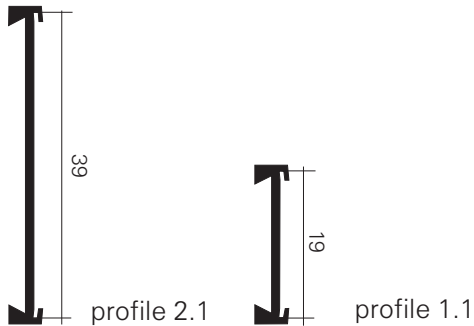
Profile accepting insert material of any kind. Self-lettering with paper, protected by non-glare PVC lense.

### Material

Aluminium extrusions  
Resistant, also for outdoor use.

### Finish

Standard is natural anodised with special **info**norm® hairline finish.  
Covers can also be painted in any colour.



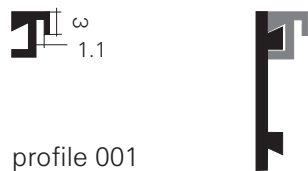
**profiles 1.1 / 2.1**

Grid height 21 mm / 42 mm accepting (paper) inserts 19 mm / 39 mm high. A non glare PVC lense (0.3 mm) thick protects the inserts. The same profiles are used for the slider system (vacant/ occupied).



**profile 1.2**

Mainly used for larger window signs. The profile height (grid) is 21 mm. Accepts inserts up to 3 mm thick. Frame- or window signs in combination with the extended 10 mm end caps Frame profile 1.2 are also often used for large escape-route signs or with plexi insert to protect large directories against vandalisme.



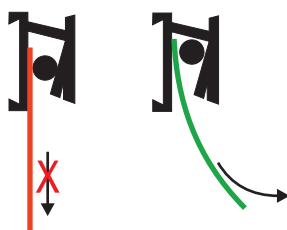
**profil 001 "infoframe"**

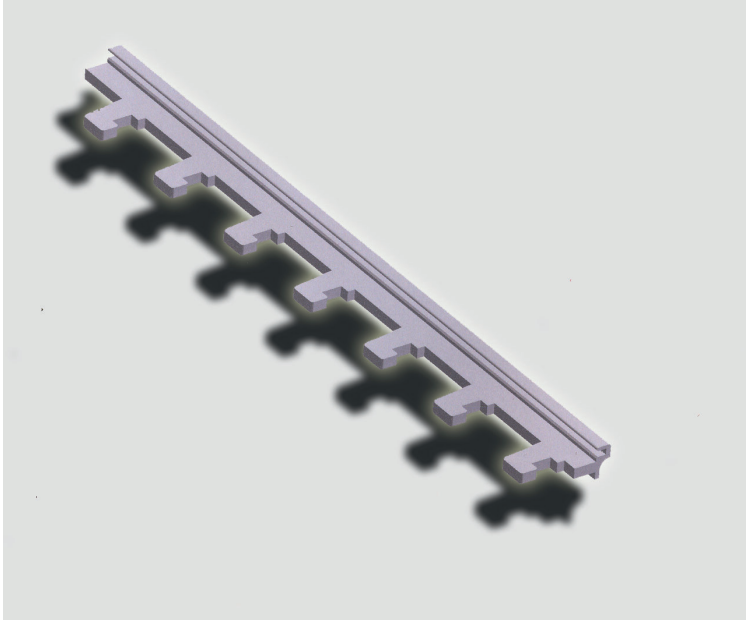
Picture frame components to display light-weight insert material. (max. thickness, 1mm) Signs incorporating the use of picture frame components infoframe are easily configured to hold insert materials that follow standard DIN proportions. Profiles 001 are also used for the popular infoframe window signs.



**profile 1.3**

Gravity clip profile (for holding messages or other temporary information)





### Function

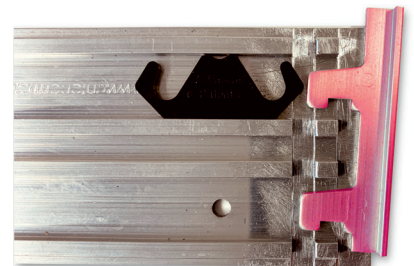
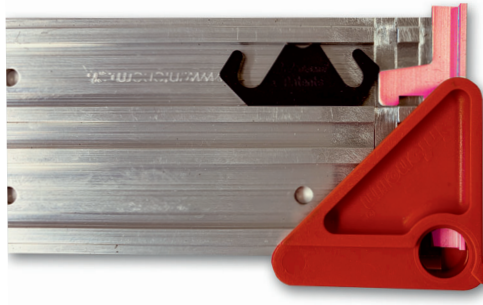
The end caps - secured by the sturdy plastic spring mounted on the base profile - holds the cover profile securely in place.

### Material

Aluminium extrusions

### Finish

Standard is natural anodised.  
They can be painted in any colour.





**Invisible End cap**

Invisible, hidden End cap



**T-Bar End cap**

Standard End cap



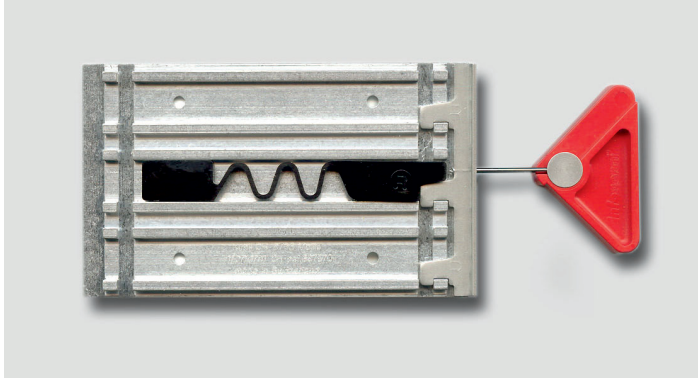
**R10H - 10 mm End cap enhanced**

Used for large window signs and escape routes. Also as holder for acrylic glass on top of directories.



**TE - picture frame End cap**

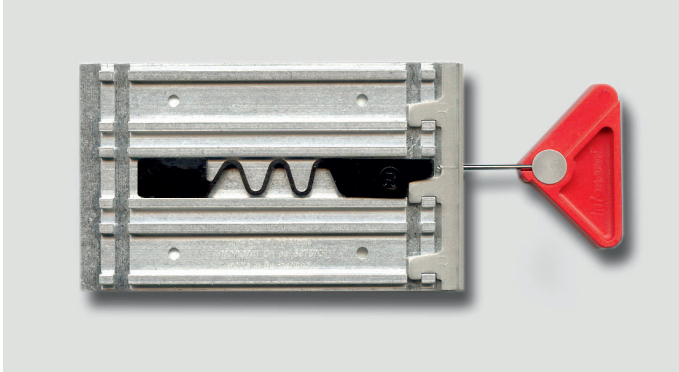
Special End cap together with the picture frame profiles  
Can also be used for standard sign.



In vandal-prone locations we recommend our highly resistant locking device. It is a spring-loaded mechanism that fits into the base plate.

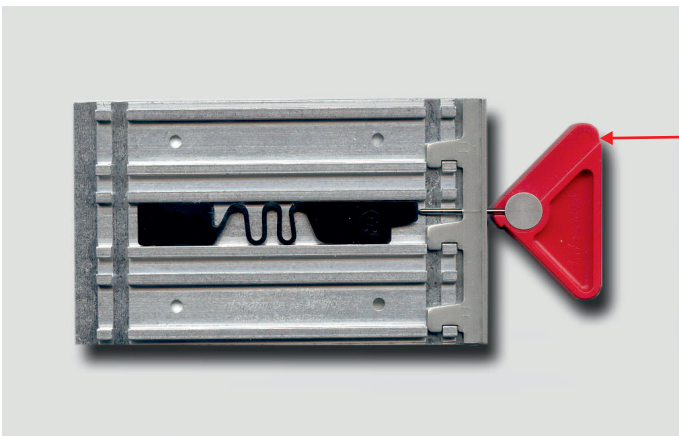
The security locking device can also be furnished and added at a later date to standard locking devices.



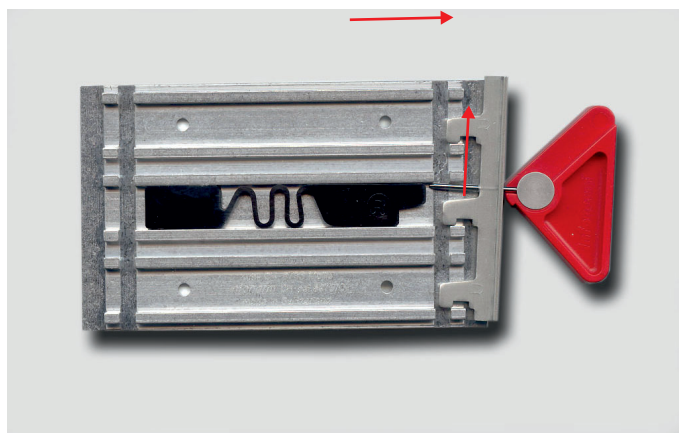


How to open

security key with pin



push in- and upwards to unlock





The following Specification represents a summary of the essential characteristics of the **infonorm**® signs system

high quality swiss signs

**General information:** Base profiles accepting one or several covers. End Caps mounted and secured by 2 sturdy plastic springs hold the cover profiles securely in place.

**Dimensions:** The grid size is 52.5 mm width  
21.0 mm height  
The thickness of the entire sign is only 6.0 mm

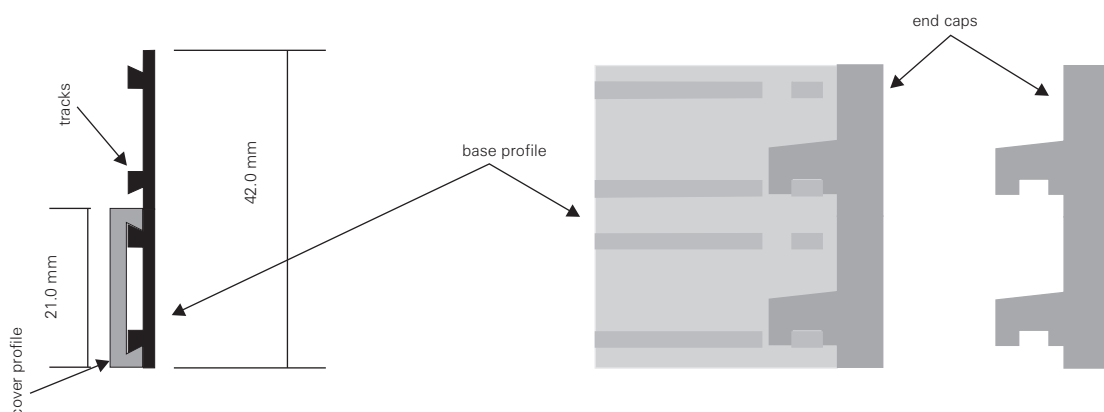
**Construction:** Three simple components provide the building blocks for each sign:  
Base profile accepting all combinations of cover profiles. With holes for invisible fixation to the wall.  
Cover profile(s) to slide on to the base profile. Large number of cover profiles are available, all can be combined. Special frame covers accepting inserts of any kind of material. Very often used for window signs in DIN- or US letter sizes. Combinations of standard and frame profiles are possible.  
End caps secured by sturdy plastic springs which are mounted on to the base profile do hold the covers securely in place. Optional security locking device upon request against vandalisme.

**Material:** All profiles are high precision aluminium extrusions.

**Finish:**  
Base profiles → mill finish  
Cover profiles → anodised in special **infonorm**® hairline finish or mill finish for thermolaquing in any RAL- or NCS colour.  
End caps → same as covers. Available in various shapes and looks.

**Function:** To unlock the sign the end caps need to be pushed upwards. All **infonorm**® signs can be protected against vandalisme with a security locking device. A special security key is needed. (more details see technical catalog)

**installation:** **infonorm**® signs are very user-friendly in terms of installation. Double-tape or using the holes in the base profiles for an invisible fixation to the wall.



***infonorm***<sup>®</sup>  
*sign systems*

Kubli Feinmechanik AG  
Glärnischstrasse 2  
CH - 8753 Mollis  
fon: +41 (0)55 612 4440  
mail: [info@infonorm.ch](mailto:info@infonorm.ch)  
web: [www.infonorm.ch](http://www.infonorm.ch)